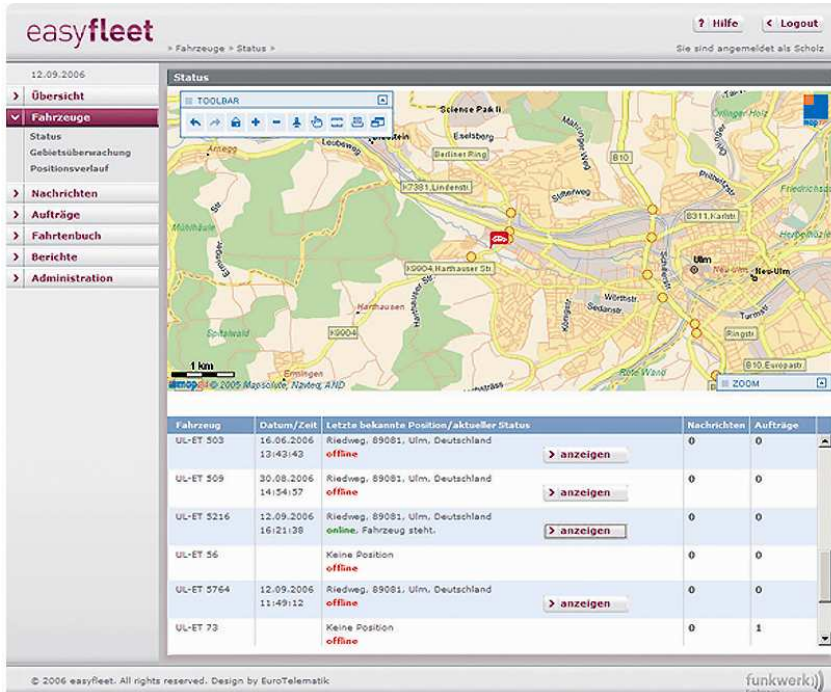


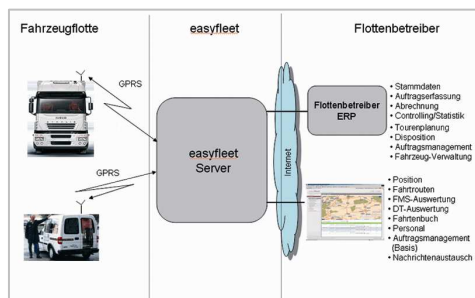
MapTP Case Studies: easyfleet – The Fleet Management Portal of Euro Telematic AG



Euro Telematik AG offers fleet managers pin-point accurate vehicle locations via their web-based portal easyfleet. The telematics supported service makes life easier for transport- and service companies in sectors such as vehicle location, communications, and contract management. Despite its complexity easyfleet is easy to use and combines stability and user friendliness with high functionality. The basis for this service is provided by the geographic software MapTP.

The Internet portal easyfleet combines map based vehicle locations with effective contract management. Users can follow the complete dispositions workflow from the receipt of the contract to the successful delivery on one platform, because the implemented mapping software MapTP can not only locate the geographic position of the vehicle but also give status information about the vehicle, up to date contract details and display a time stamp for deliveries made, directly on the map. In addition, the software has the capability to oversee whole areas, so called geofencing. The user can specify a geographic area within a certain radius. If a vehicle drives along or leaves this area a pin-point accurate position is sent via GPRS to the control center. Diversions and thefts can therefore be avoided or detected early.

MapTP provides a near real time, user friendly solution for easyfleet users. The execution of interactive commands such as the display of status information or individual routes occurs in excellent quality. Logistics service providers can also include mobile processes in and around the vehicle with up to date information as part of the commercial process control. The service significantly reduces the work load of the manager. The transport process is transparent and is therefore more economical as a whole.



In their own words:

“The MapTP services were quickly integrated into easyfleet. In addition, the mapping software is far superior because of its high interactive capability. During the development of easyfleet it was important to us to have an application that combines clarity with in-depth functionality. The integration of the MapTP service has played a significant part in this.”

Dirk Maaßen
Technical Manager

Facts & Figures:

About Euro Telematic

■ Euro Telematik AG is a leading provider of sector specific telematics systems for the control and management of mobile applications for transport and logistics companies as well as for the aviation and space travel industry. The company offers everything under one roof: Engineering services, products and telematics solutions which are to aviation standard in all transport sectors. Since February 2006 Euro Telematik AG is part of Funkwerk AG, Automotive Communications division.

URL: <http://www.easyfleet.de>

Integrated MapTP Services

- MapTP Geocoding Service
- MapTP Reverse Geocoding Service
- MapTP Remote Control Service
- MapTP MGI Service

Development Platform: Visual Studio 2003/2005, C#, ASP.NET.

Hosting: The service is hosted by TimoCom Soft- und Hardware GmbH using Windows NT.